



# Control Room Console Catalogue

Exclusive partnership delivering globally certified control room console solutions across Australia and New Zealand.

# Table Of Contents

01.	About COMCON Solutions .....	4
02.	About Pyrotech Workspace .....	5
03.	Certifications & Standards .....	6
04.	Design & Engineering Scope .....	7
05.	100% Modular Console Systems .....	8
06.	Ergonomic & Traffic Room Study .....	9
07.	Ergonomic Considerations .....	10-11
08.	Why Control Rooms Choose Us .....	12-13
09.	Global Footprint .....	14-15
10.	Product Portfolio Overview .....	18-85
	• XLAT	
	• XLAT-SE	
	• XLAT-XE	
	• XLAT-ZE	
	• XLAT-ZE+	
	• XLAT-Cyber	
	• INFI	
	• INFI-XE	
	• DYNAMIC-XE	
	• DYNAMIC-M	
	• ATC Console	
11.	Services Overview .....	86
12.	Ergonomic & Traffic Study .....	87
13.	Acoustic Study .....	88
14.	Control Room Interior Design .....	89
15.	Installed Consoles Gallery .....	90-91





## Australia's Trusted Interface for Global Control Room Solutions

- COMCON Solutions is the exclusive Australian representative of Pyrotech Workspace a globally trusted manufacturer of advanced control room console systems.
- Based in Australia and deeply familiar with the demands of mission-critical industries, COMCON bridges local expectations with international expertise.
- From mining and energy to defense and emergency services, we provide ergonomic, modular, and compliant console solutions tailored for the Australian environment supported by responsive, on-ground service.

## Backed by Pyrotech Workspace Trusted in 15,000+ Control Rooms Worldwide

- Pyrotech Workspace Solutions (PWSPL) is a global leader in designing and manufacturing ISO 11064-certified control room furniture.
- With 50,000+ consoles installed across more than 60 countries, Pyrotech serves high-stakes sectors such as energy, mining, transportation, defense, and utilities where 24/7 reliability, ergonomics, and custom engineering are non-negotiable.
- Every console is built for performance, engineered for people, and certified for global standards.



**50,000+**  
Consoles

**300+**  
Custom Layouts  
Delivered

**60+**  
Countries

**ISO**  
Certified

# Globally Certified. Industry Compliant.

- All COMCON console solutions manufactured by Pyrotech Workspace
- comply with international control room standards and certifications, including:



Greenguard



Greenguard Gold



UL Tested



BIFMA Level 3



ASTM E84



ISO 11064 Compliant



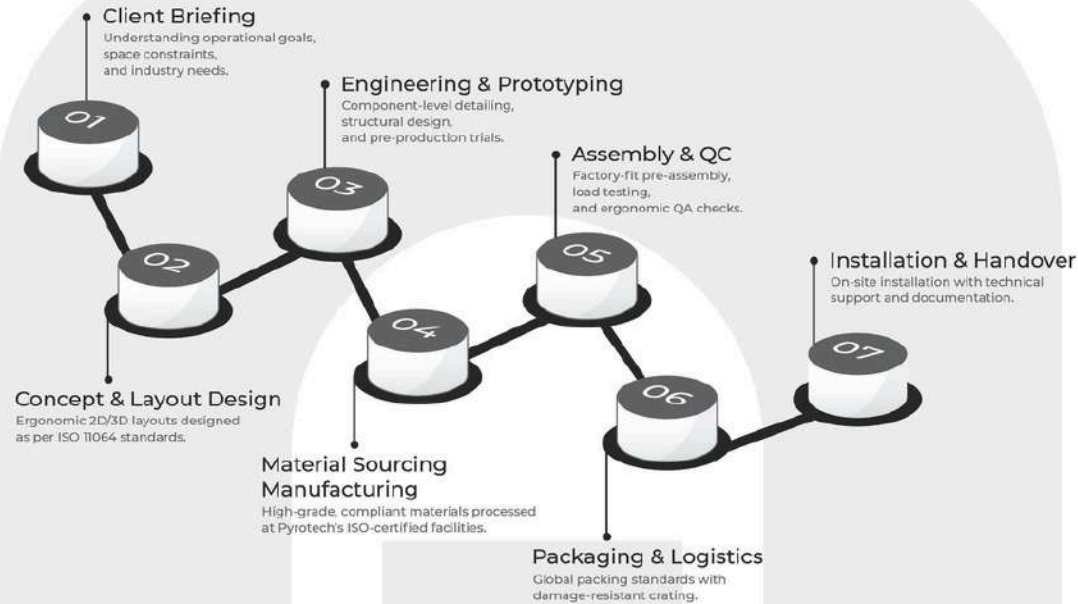
RoHS Certified

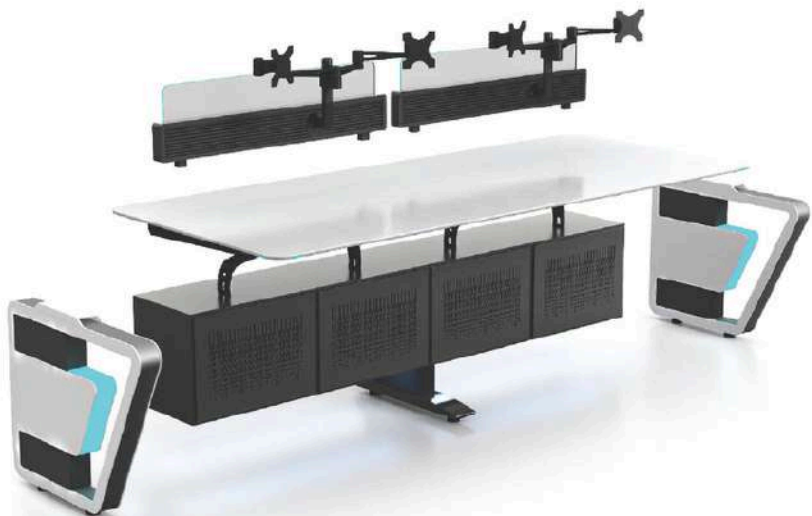


Life Cycle Assessment (LCA)

# Design-Led. Performance-Built.

Our in-house team manages every aspect from concept to commissioning ensuring that every console is tailored, tested, and delivered with precision.

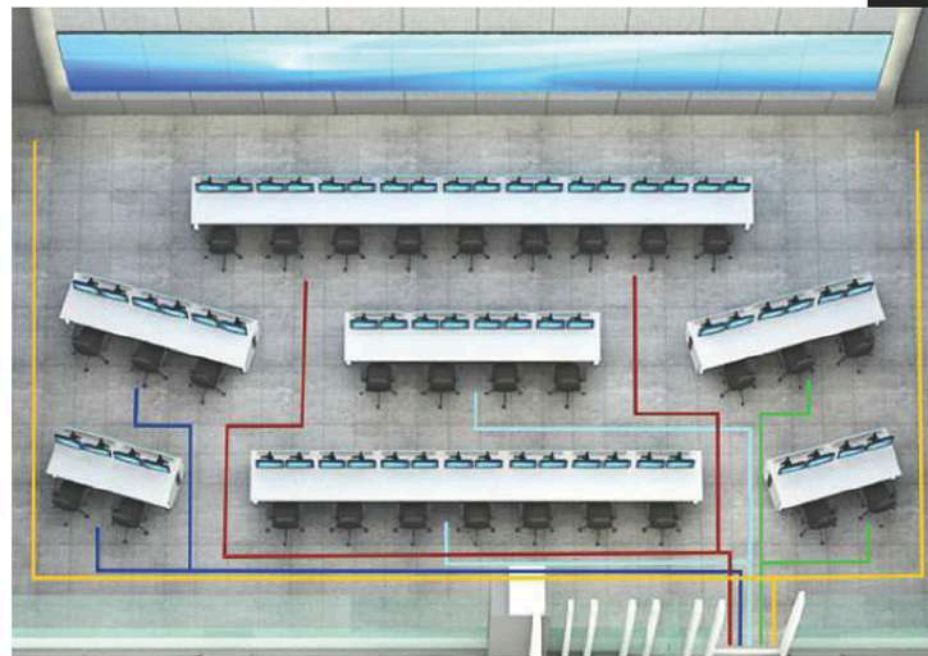




## Modular by Design. Flexible by Nature.

Every COMCON console system is 100% modular built from independent, interchangeable parts for fast configuration, field upgrades, and lifecycle efficiency.

Whether you need hot-swappable equipment bays, removable access panels, or reconfigurable layouts for future expansions our consoles adapt to your evolving operations without disruption.



- Emergency
- Startup
- Normal
- Maintenance

## Engineered for the Human at the Console.

Our consoles are designed according to ISO 11064 ergonomic standards ensuring that every surface, screen, and switch is placed to reduce fatigue, improve alertness, and support round-the-clock operator focus.



# Comfort. Control. Compliance.

Ergonomic intelligence is built into every detail.

- C Sit-stand functionality
- C Eye-level monitor positioning
- C Glare-free surface materials
- C Integrated footrests
- C Adjustable operator work zones
- C Rounded edge design



# Why Control Rooms Across Australia & New Zealand Choose COMCON

Our in-house team manages every aspect from concept to commissioning ensuring that every console is tailored, tested, and delivered with precision.

- G Engineered for 24/7 Environments**  
Built for continuous operations, with long-lasting structural integrity.
- G ISO 11064 Ergonomic Design**  
Every console layout promotes operator wellness and alertness.
- G 100% Modular Architecture**  
Configurable systems for easy expansion, servicing, and reconfiguration.
- G Electrically Height Adjustable Options**  
Sit-stand designs for comfort, health, and flexible shift usage.
- G Integrated Equipment Management**  
Hidden cable routing, cooling systems, and secure access panels.
- G Customizable Console Configurations**  
Tailored to site requirements, use-case, and sector-specific needs.
- G Fire-Retardant and Seismic-Safe Materials**  
Compliant with ASTM and Zone 5 certifications for safety-critical zones.
- G Built to Last**  
10+ year design life with global warranties and service assurance.





**Proven Globally. Delivered Locally**



**50,000+** Consoles Installed



**300+** Control Room  
Layouts Delivered



**60+** Countries Served



**15+** Years in  
Mission-Critical Operations



**5 Verticals**  
Mining, Utilities, Transport,  
Defense, Emergency Services



# Trusted by Industry Leaders Worldwide

From critical infrastructure to national security,  
Our consoles power control rooms at the  
highest level of responsibility.



# Console Systems for Every Mission-Critical Environment

Our control room consoles are built to meet the operational demands of high-performance environments from resource extraction to defense coordination.





# XLAT

## XLAT

Reliable. Adaptable.  
Control-Room Ready.



The XLAT console is a versatile foundation for mission-critical environments.

Built with modularity at its core, it accommodates varied spatial layouts and operational demands from dispatch centers to energy networks ensuring comfort, durability, and performance for 24/7 operations.



## Built for Control

- Modular frame structure
- Configurable in straight, angular, or curved layouts
- Rear and under-desk cable management
- Compatible with KVMs and control peripherals
- Supports multi-monitor arrangements
- Optional personal equipment bays
- ISO 11064 ergonomic compliance





## Trusted. Field-Tested

Deployed across hundreds of installations XLAT adapts to evolving control room demands with ease.

# XLAT



# XLAT-SE

## XLAT-SE

Compact Power.  
Full Performance.



The XLAT-SE is a space-conscious console designed for control rooms where layout flexibility and operational performance go hand-in-hand.

Its slim structure makes it ideal for training zones, support pods, or auxiliary operation rooms delivering ergonomic rigor without occupying excessive floor space.





## Compact, Not Compromised

- Slim leg profile for tighter room layouts
- Rear cable channel with service access
- Compatible with wall-mounted and dual-screen setups
- Optional CPU bay under desk
- ISO 11064 ergonomic design
- Modular construction for fast fit-outs

## Built for Smaller Spaces

Ideal for compact control rooms and support stations that demand professional-grade infrastructure.

# XLAT-SE





# XLAT-XE

## XLAT-XE

Engineered for Intensive  
24/7 Operations.



The XLAT-XE is a flagship-grade console tailored for high-stakes, high-density environments.

With integrated equipment housing, dynamic cable infrastructure, and optional sit-stand capability, it's purpose-built to support mission-critical workflows without compromise whether managing infrastructure, emergency response, or large-scale networks.



## Built to Command

- Modular leg tower with rear access
- Integrated vertical equipment bay
- Heavy-duty cable tray with power/data routing
- Adjustable monitor mounts (articulated or slat wall options)
- Sit-stand compatibility
- Suitable for video wall configurations
- ISO 11064 ergonomic compliance
- Field-serviceable modules for upgrades and replacements

## Built for Smaller Spaces

Deployed in high-stakes environments where control, comfort, and continuity can't be compromised.

# XLAT-XE





# XLAT-ZE

## XLAT-ZE

Essential Control.  
Global Standards.



Designed in accordance with ISO 11064 and HFDS ergonomic frameworks, the XLAT-ZE offers foundational performance with uncompromised operator comfort.

A cost-effective solution for training rooms, backup centers, and compact control stations it prioritizes posture, visibility, and operational efficiency in a clean, modular form.



## Essentials Delivered

---

- Lightweight modular construction
- Basic equipment integration options
- Clean under-desk cable routing
- Optional CPU housing and equipment trays
- Available in single-operator or linear chain setups
- Ergonomic layout adhering to ISO 11064
- Cost-efficient without sacrificing quality

---

## Access Made Scalable

A perfect fit for scalable deployments in training labs, simulation rooms, or small utilities.

# XLAT-ZE





# XLAT-ZE+

## XLAT-ZE+

More Comfort.  
Smarter Control.



The XLAT-ZE+ elevates the entry-level console experience with a future-forward sit-stand mechanism, advanced ergonomics, and premium spatial design.

Equipped with motorized height adjustment, intuitive controls, and signature slatwall integration it redefines comfort for continuous-use environments on a scalable budget.



## Enhanced Efficiency

---

- Extended surface depth and width
- Optional rear-mounted monitor rail
- Improved equipment access panel
- Expanded cable routing infrastructure
- Modular build with compact footprint
- Ergonomically compliant for multi-shift use



## Step Up in Simplicity

XLAT-ZE+ gives growing teams a future-ready workspace compact in size, confident in performance.

# XLAT-ZE+





# XLAT Cyber

## XLAT-Cyber

Engineered for  
Cybersecurity Environments



Purpose-built for network operations, cybersecurity war rooms, and surveillance hubs the XLAT-Cyber console combines data-sensitive integration, clean layouts, and secure equipment housing for high-trust command centers.



## Network-Ready Design

- Secure CPU and server bay integration
- Segregated cable management zones
- Lockable rear access panels
- Configurable for NOC/SOC requirements
- Monitor wall and KVM-ready
- Designed for 24/7 operation
- ISO 11064 ergonomic standard



## Secure by Design

Whether monitoring infrastructure or defending networks, XLAT-Cyber brings structure and control to high-stakes environments.

# XLAT-Cyber





# INFI

## INFI

Sleek. Minimal. Mission-Fit.



The INFI console is purpose-built for compact command environments delivering streamlined ergonomics in a minimalist footprint.

With a low-profile leg frame and simplified equipment routing, it supports everything from NOCs and SOC's to security stations and local control hubs. A smart solution where simplicity, visibility, and spatial efficiency are top priorities.



## Streamlined Control Essentials

---

- Compact form factor for low-footprint environments
- Modular layout with clean geometry
- Under-surface cable tray and power access
- Compatible with wall-mounted or slatwall displays
- Optional CPU or equipment housing modules
- ISO 11064 ergonomic alignment
- Ideal for surveillance, telecom, and small control zones

---

## Minimalism, Maximum Utility

INFI excels in lean control centers — where clarity, collaboration, and continuous uptime matter most.

INFI





# INFI-XE

## INFI-XE

Ultra-Slim. Feature-Rich.



INFI-XE refines the minimalist INFI console into a premium-grade system for extended shift applications.

With integrated vertical mounts, sit-stand compatibility, and clean cable architecture, it delivers full-scale performance in a sleek footprint perfect for hybrid use cases like unified communications centers and smart city command rooms.



## Designed for Demanding Simplicity

- Ultra-slim frame with reinforced cable management
- Integrated equipment mount or slatwall options
- Optional electric sit-stand mechanism
- Suitable for multi-monitor deployments
- Modular expansion pods for scalability
- ISO 11064 compliant for 24/7 use
- Ideal for shared workspaces and compact control centers

## Designed to Disappear

The INFI-XE blends into modern environments while quietly enabling uninterrupted performance.

# INFI-XE





# DYNAMIC XE

## DYNAMIC XE

Powerfully Adaptive.  
Visually Precise.



DYNAMIC-XE is engineered for technology-intensive control environments that require exceptional visibility, access, and adaptability.

With its elevated monitor shelf, integrated slatwall, and structured cable management, it supports seamless collaboration and real-time monitoring making it ideal for utilities, traffic management, and emergency ops centers.



## Elevated for Performance

---

- Elevated work surface with integrated slatwall
- Adjustable monitor arms for optimal sightlines
- Rear cable ducting with easy access
- Optional under-desk CPU storage
- Ideal for tiered control room layouts
- ISO 11064 ergonomic layout
- Modular, scalable configurations

---

## Visibility Meets Control

From grid operators to crisis responders DYNAMIC-XE provides ergonomic clarity and operational flexibility when seconds count.

# DYNAMIC-XE





# DYNAMIC M

## DYNAMIC M

Minimal Footprint.  
Maximum Utility.



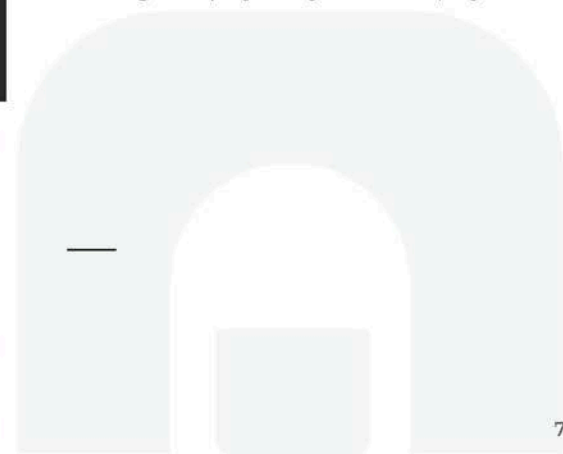
DYNAMIC-M is a single-operator console tailored for compact stations and focused monitoring pods.

Built for quick deployment in hybrid control zones, kiosks, or technical bays, it combines clean design with just-right equipment integration ideal for evolving utility spaces or satellite ops centers.



## Designed for Single Ops

- Compact single-operator frame
- Built-in slatwall or pole-mount display options
- Integrated cable channel
- Optional CPU or rack module
- ISO 11064 ergonomic structure
- Plug-and-play ready for fast deployment





## Small Format, Big Impact

DYNAMIC-M delivers professional-grade ergonomics in the most constrained control room footprints.

# DYNAMIC M





# ATC Console

## ATC Console

Unobstructed Visibility.  
Uninterrupted Control.



Purpose-built for air traffic command environments, Pyrotech's ATC Console is precision-engineered to support real-time runway and airspace management.

It empowers controllers with clear 360° visibility, fast access to mission-critical tools, and ergonomics tailored for high-alert operational scenarios. With proven installations across 20+ global airports, this console is trusted where zero error is the only acceptable standard.



## Flight-Critical Functionality

---

- Modular and sleek structural design
- Supports radar, VCCS, strip printers, PTT, and auxiliary equipment
- Integrated cabling and service access
- Minimalist sightline profile for 360° runway visibility
- Quick maintenance with zero operational downtime
- ISO 11064 ergonomic compliance
- Ideal for ATC towers, AOCs, and airside security monitoring

---

## Designed to Guide Safely

From tower to tarmac, COMCON's ATC Console transforms complex flight movements into a smooth, safe flow without compromise.

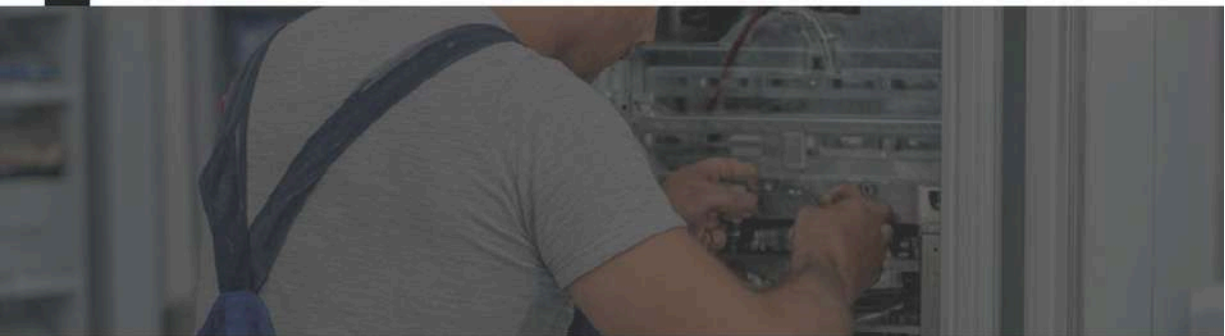


# ATC Console



## Our Services

From layout science to acoustic tuning we design control room environments that think, adapt, and endure.



COMCON Solutions offers a complete suite of services to support critical operations environments engineered in collaboration with Pyrotech Workspace and delivered with local precision.

We don't just place consoles we plan human workflows, reduce operator fatigue, and future-proof your space for 24/7 control.



### • Ergonomic & Traffic Study

ISO-based layout design and operator movement mapping



### • Acoustic Study

Intelligent sound control for calm, high-focus environments



### • Control Room Interior

Complete interior design from console integration to ceiling acoustics

## ISO-Certified Ergonomic & Traffic Mapping

Optimising console interaction and operator safety with human-centric layout science.

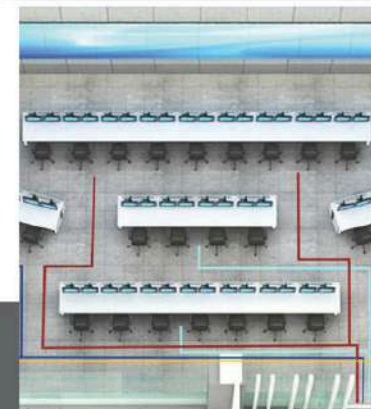


### Ergonomic Zone Engineering

- ISO 11064 and FIRA-based layout planning
- Reach zone and sightline simulations
- Tiered work surfaces and monitor angling
- Sit-stand configurations for fatigue reduction

## Traffic & Operator Flow Simulation

- Real-time movement and handoff route planning
- ADA compliance and egress mapping
- Congestion point prediction and clearance zones
- Equipment zone interference analysis



## Acoustics Engineered for Mission-Critical Calm

Reducing distraction, enhancing clarity for the environments where focus is non-negotiable.

### Noise Control Strategy

- Pre-construction acoustic modeling
- Reverberation and speech clarity optimization
- Source isolation from HVAC and electronics

### Material & Finish Integration

- Acoustic wall, ceiling, and flooring treatments
- Sound-dampening console skirts and panels
- Seamless transitions across operator zones

### Performance Tuning

- High-alert station sound zoning
- Collaborative vs. silent area separation
- Targeted decibel reduction for fatigue control

## Complete Control Room Fit-Outs

Where technical precision meets interior clarity designed for operational harmony.

### Design Tiers to Match Scale

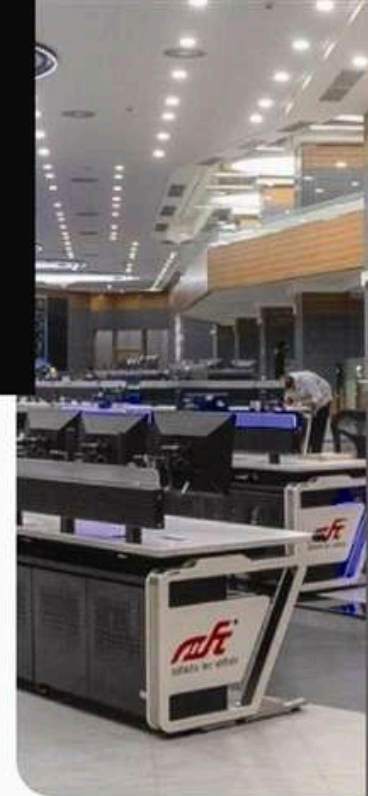
- **Standard:** High-durability functional finishes
- **Premium:** Branded, modular, cost-effective
- **Iconic:** Feature-rich architectural integration

### Workflow & Layout Planning

- Line-of-sight clearance and monitor angles
- Traffic flow, ADA routing, and equipment zoning
- Glare, lighting, and floor load management

### Material Coordination & Brand Integration

- Desks, walls, floors, and ceilings in unified tones
- Acoustic and lighting continuity
- Brand-colored surfaces and visual anchors

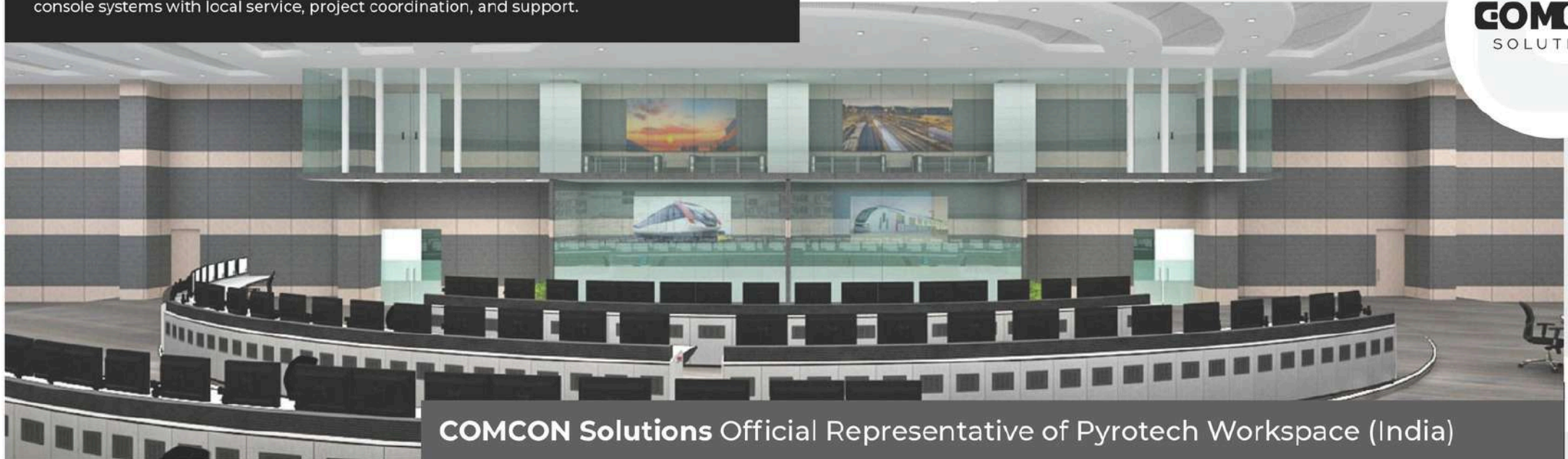




# Let's Build The Control Room You Envision

COMCON Solutions represents Pyrotech Workspace in Australia delivering globally certified console systems with local service, project coordination, and support.

**COMCON**  
SOLUTIONS



**COMCON Solutions** Official Representative of Pyrotech Workspace (India)



Operating across Australia & New Zealand



+61 433 476 577



[sales@comconsolutions.com.au](mailto:sales@comconsolutions.com.au)

<https://comconsolutions.com.au/>